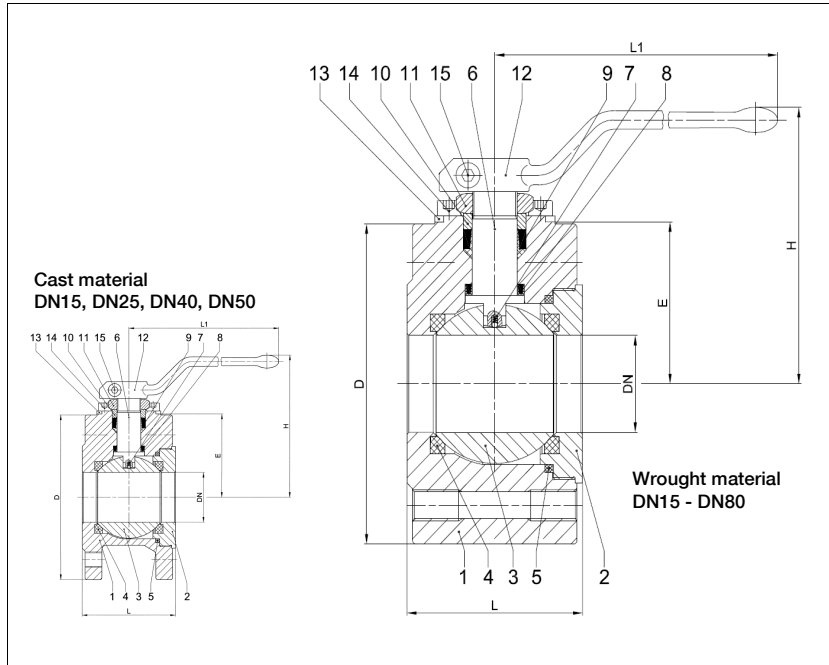


BALL VALVES INTEC

K200-K, DN15 - DN80, PN40
floating ball, soft seated



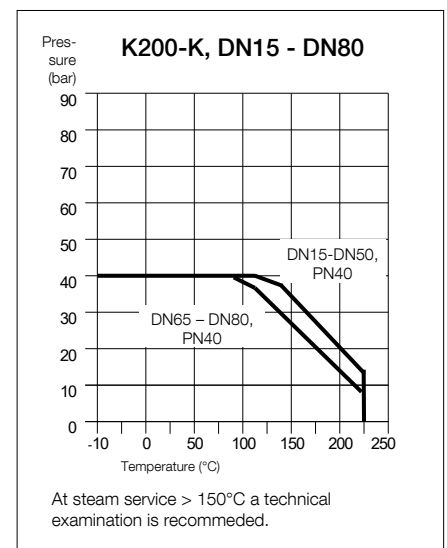
Wafer type ball valve
full bore
face to face acc. to EN 558, GR. 107
flanges acc. to EN 1092

Specification:

One-piece ball valve with flanges acc. to EN 1092, face to face dimensions acc. to EN 558, GR.107, full bore, blow-out-proof stem, body material stainless steel (1.4571/1.4404/1.4408) or carbon steel (1.0460/1.0619), antistatic device, free on non-ferrous metals, flange facing without interruption, cap mounted on block, body seal contact arrangement full chambered, seat full chambered, stem packing Graphite/KFGN/ KFAM system dynamic loaded adjustable, top flange DIN EN ISO 5211, approved by PED, certified acc. to GERMAN clean air act VDI 2440, Fire-Safe acc. to DIN EN ISO 10497, with lever.

Marking: INTEC K200-K

No.	Part	Material code	Material code
Standard design			
1	body	1.0460/1.0619	1.4571/1.4404/1.4408
2	cap	1.0460/1.0619	1.4571/1.4404/1.4408
3	ball	1.4408	
4	seat	KFGN/KFM	
5	body seal	KF	
6	stem	1.4462	
7	antistatic element	1.4401/1.4571/1.4404	
8	below seal	KFGN/Graphite	
9	upper seal	KFAM/Graphite	
10	bearing	PEEK	
11	hex. nut self-locking	A2/1.4301	
12	lever	1.4408/1.4308/steel zincplated	
13	stopper	1.4301	
14	allen screw	A2-70	
15	allen screw	A2-70	
Fire-Safe design			
5	combined body seal	KF-Graphite	
9	Fire-Safe seal	Graphite	
	ring	1.4571/1.4404	
	thrust washer	PEEK	



Ordering example:
INTEC K200-K, DN50, PN40, 1.0460,
Fire-Safe

Dimensions

DN mm	PN	dimensions (mm)					top flange ISO	torque Nm**	weight kg ca.	
		H	L1	L	D	E			wrought material	cast material
15	40	95	160	50	95	39.5	F05	10	2.8	1.9
20	40	105	160	50	105	46.0	F05	16	3.3	--
25	40	114	180	60	115	49.5	F05	29	4.8	4.1
32	40	130	180	65	140	59.0	F05	46	7.6	--
40	40	135	300	80	150	76.0	F07	55	10.5	6.8
50	40	143	300	95	165	83.5	F07	88	14.8	9.1
65	40	155	300	110	185	94.0	F07	143	20.7	--
80	40	197	500	145	200	102.5	F10	208	30.6	--

** Necessary torque measured with treated water at ΔP acc. to pressure class and room temperature.